

2024

Swiss Federal Research Institute WSL

Research for people and the environment in a changing world



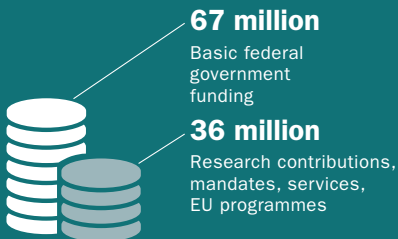
Knowledge

We generate knowledge about the environment via scientific publications, lectures, the DIAGONAL magazine, information for specialists, events and websites.



Finances

We are mainly funded through a basic contribution from the federal government, with additional contributions for research from the Swiss National Science Foundation (SNSF), other foundations, and the EU, as well as contracts with state and private entities.



103

Annual budget in million Swiss francs

Highlights in 2023



SNSF funding for the analysis of global vegetation zones and of heat waves in rivers



Appointed:
Professor
of Glaciology



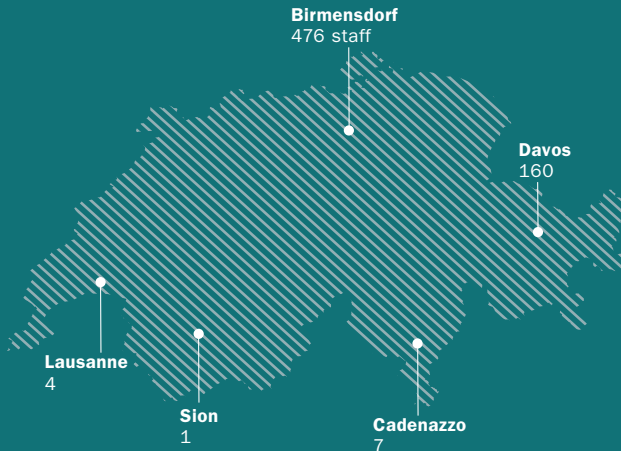
Published:
Book about lichens,
describing field
excursions



Open Door event
in Davos:
2000 interested
visitors at SLF

Locations and cooperation

We maintain more than 6000 test, observation and experimental sites, large-scale test facilities, and laboratories in all language regions of Switzerland. We also cooperate actively with partners from all over the world.

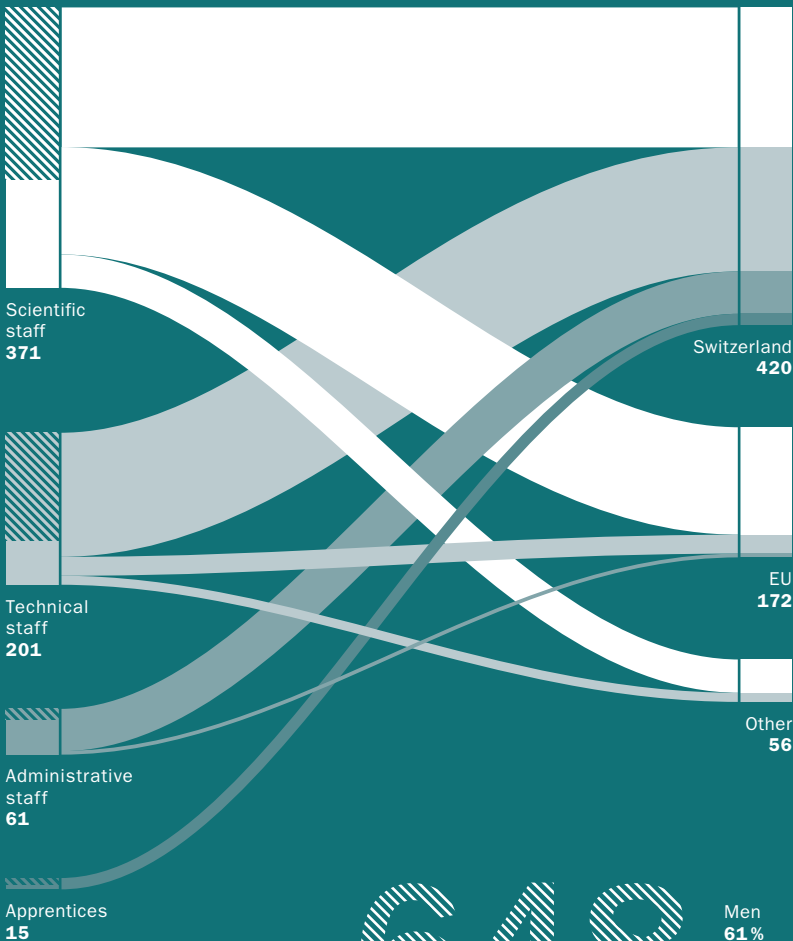


Swiss Federal Institute for Forest, Snow and Landscape Research WSL (wsl.ch)
WSL Institute for Snow and Avalanche Research SLF (slf.ch)
Acting Director: Dr. Christoph Hegg
WSL is a research institute of the ETH Domain.

Staff

Function

Origin



648

Total staff

Men
61%

Women
39%



Our Focus

Research, knowledge transfer, and services relating to forests, landscapes, biodiversity, natural hazards, and snow and ice form the core of our work.

This expertise in terrestrial environmental research forms the foundation of our four development foci for the next decade:

- Global change impacts: mitigation and adaptation
- Sustainable urbanization for livable cities
- Environmental governance
- Multifunctional landscapes and ecosystems

These interdisciplinary foci target societally relevant and scientifically promising questions. Through them, WSL makes a substantial contribution to overcoming global challenges.



Vision and Mission

The Swiss Federal Institute for Forest, Snow and Landscape Research WSL conducts solution-oriented research on forests, landscapes, biodiversity, natural hazards, and snow and ice in a changing world. As a federal research institute and part of the ETH Domain, it is committed to excellence in research and implementation.

Services for Switzerland

Together with our partners from science and society, we develop sustainable solutions for societally relevant problems. Findings from our research are often integrated into services that are relevant for the local authorities, the business sector, and the general public.

Such services include:

- Avalanche bulletin
- National Forest Inventory NFI
- Swiss Forest Protection information platform
- Hydrological forecasts





Geschichte

WSL was founded in 1885 as a forest research institute. In 1989, the Federal Institute for Snow and Avalanche Research SLF became part of WSL.

